

Options Consideration

November 1, 2023

A dark blue diagonal gradient bar that starts from the bottom left corner and extends towards the top right corner, covering the lower half of the slide.

*Thank
You!*

The Hillsdale Board of Education

Our Parents

Hillsdale Residents

**Borough of Hillsdale Business
Administrator**

Agenda

Brief History

Next Steps

Revised Cost Estimates

Overview of Plans

Breakout Sessions

Group Feedback

Closing

June 1 Meeting Feedback

- *The cost was too high*
- *Something needs to be done relating to George G White*
- *Relocate 5th grade to their respective elementary schools*
- *More communication*

October 5, 2023 Meeting Feedback

- *More State Aid is present*
- *Interest highest in Options 2&3*
- *Enhanced understanding is needed differentiating Option 2 & 3*
- *Additional programming options at GW are desirable. (STEM, MakerSpace, Culinary Arts, Industrial Arts)*

The Barriers

There is a Cost
Divided Feelings
Time

Social Media
I have a guy . . .
Current Events

In-The-Moment Considerations

- ***Presenting and modifying options in real-time***
- ***Costs in 2025***
- ***Bonding Mechanism is Different***

Guiding Principles



- ***Save George White***
- ***Maximize State Aid***
- ***Lower Tax Impact***

The Constraints

- The size of a classroom - Approx 540 sq ft.
- The number of classrooms
 - Every period rooms are filled
 - Restricting Scheduling
- Science Labs
 - Only 3 science labs when 4 are needed
 - Every science lab is dated and in need of updating for for access to a 21st century learning experience
- No dedicated STEM space
- Music
 - Currently use a small instruction space behind the stage for chorus
 - Band uses the stage in the multi-purpose room
- TV Production Studio
 - Classroom is among the smallest
 - Technology dates back 10 years - In need of renovated inviting space
- Cafetorium/ Multi Purpose Room
 - Acoustics, Lighting, Sound, Stage Space, Air Conditioning, Basketball Court

The Constraints Continued . . .

- Student lockers - When in use consistently, combination locks are consistently breaking, jamming, or malfunctioning
- No student common space to welcome gathering collaboration, social interaction
- Mechanical Systems
 - Heating
 - Electric
- Restrooms - You have seen them, but this is coupled with frequency in sink, stall and urinal closings
- Nurse's Office - Small, poor traffic flow for nurse and students, open space with added privacy for those experiencing illness/personal need
- Wellness Space
- Counseling space for students - Limited
- When it rains . .
- Parking
- Drop-Off/Pick-Up Zones

The Constraints Continued . . .

- Cafeteria Services - No built for servicing 500+
- Intercom System - Showing its age - Sounds begins to diminish as the lines travel from the main office
- Conference Room Space- Parent meetings
- Small Group Instruction Rooms
- Stairwell- Conditions and width
- Building Facade, Cement Structure and Exterior Attributes
- Field/Blacktop Area
- Flooring
- Windows
- Storage - Teacher classrooms, gym, multi-purpose room, books overall

*A Rainy Day
at George
White Middle
School . . .*

Sept. 2023



Timeline

Projected September 2024 Referendum

September 2024 - Referendum Vote

July 2024 - Submission of Referendum Question to Bergen County Office of Elections

June 2024- Anticipated Receipt of PEC Letter

February 2024 - Submission of Plan to NJ Department of Education

Jan/Feb.2024- Decision on Plan

December 2023(Tentative)- Options/Review Feedback

November 2023 - Options/Review Feedback

October 2023 - Options Review/Feedback

Costs

All costs are estimates

A dark blue diagonal gradient bar that starts from the bottom left and extends towards the top right, covering the lower half of the slide.

*ALL COSTS ARE
BASED ON OUR
PREVIOUS 30-YEAR
Bond Option*

*IN A RENOVATION
PROJECT YOU
CANNOT BOND FOR
30 YEARS*

*WHEN THE TERM OF THE
BOND IS SHORTENED AND
INTEREST RATES
ADJUSTED FOR 2025
COSTS WILL GO UP*

Cost Constants with Each Plan

	Yearly	Monthly
<i>GW Renovations</i>	\$563	\$47
<i>Temporary Classrooms</i>	\$40	\$3.34
<i>Field</i>	\$14	\$1.17
<i>These costs do not reflect any additional space at ABS or Meadowbrook.</i>		

OPTION 1	Yearly	Monthly
GW Renovations	\$563	\$47
Temporary Classrooms	\$40	\$3.34
Field	\$14	\$1.17
Smith School Addition	\$123	\$10.25
Meadowbrook Addition	\$75	\$6.25
Cost to Taxpayer	\$49.8m (est)	
Est. State Aid	\$15.9 m (est)	
Total Cost	\$65.7 m (est)	
Estimated Final Costs (30 yr bond)	\$815	\$68

OPTION 2	Yearly	Monthly
GW Renovations	\$563	\$47
Temporary Classrooms	\$40	\$3.34
Field	\$14	\$1.17
Smith School Addition	\$123	\$10.25
Meadowbrook Addition	\$75	\$6.25
Enhanced Program	\$90	\$7.50
Cost	\$55.2m (est)	
Est. State Aid	\$16.06 m (est)	
Total Cost	\$71.2 m (est)	
Estimated Final Costs (30 yr bond)	\$905	\$75.50

OPTION 3	Yearly	Monthly
GW Renovations	\$563	\$47
Temporary Classrooms	\$40	\$3.34
Field	\$14	\$1.17
5-8 Capacity (Including Enhanced Programming)	\$120	\$10
Cost	\$45.6m (est)	
Est. State Aid	\$16.09 m (est)	
Total Cost	\$61.7 m (est)	
Estimated Final Costs (30 yr bond)	\$737	\$61.50

<i>Side-By-Side Comparison</i>	<i>Option 1</i>	<i>Option 2</i>	<i>Option 3</i>
<i>GW Renovations</i>	\$563	\$563	\$563
<i>Temporary Classrooms</i>	\$40	\$40	\$40
<i>Field</i>	\$14	\$14	\$14
<i>Smith School Addition</i>	\$123	\$123	N/A
<i>Meadowbrook Addition</i>	\$75	\$75	N/A
<i>5-8 Capacity</i>	N/A	N/A	\$120 (5-8 Capacity <u>and</u> Enhanced Programming)
<i>Enhanced Program</i>	N/A	\$90	
<i>Est. State Aid</i>	\$15.9 m	\$16.06 m	\$16.09 m
<i>Estimated Final Costs - Yearly/Monthly (30 year bond)</i>	\$815/\$68 Estimated	\$905/\$75.50 Estimated	\$737/\$61.50 Estimated

The 3 Options

A large, solid dark blue shape that starts from the bottom left corner and extends diagonally upwards towards the right, covering the bottom half of the slide.

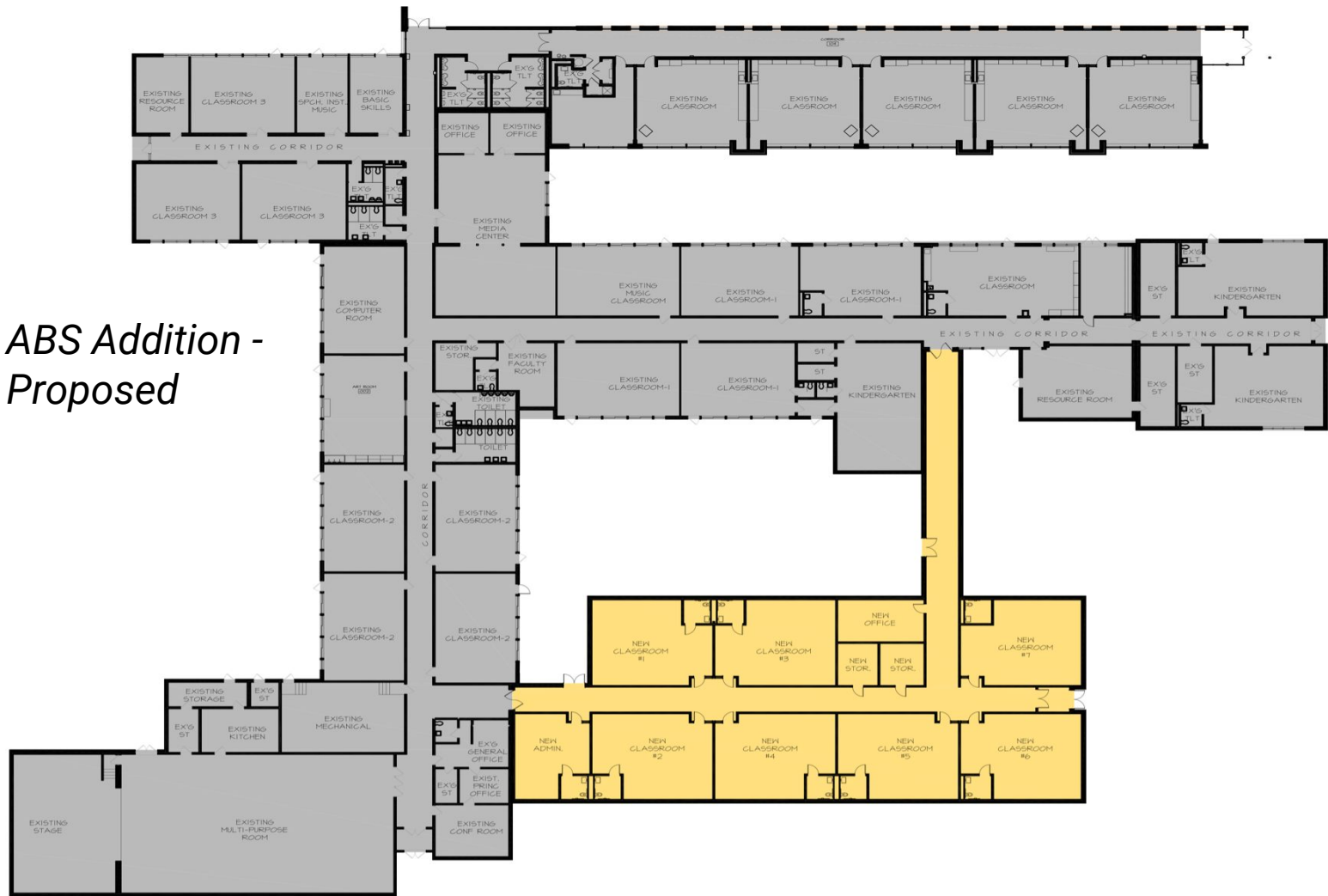
The 3 Options – Background Knowledge

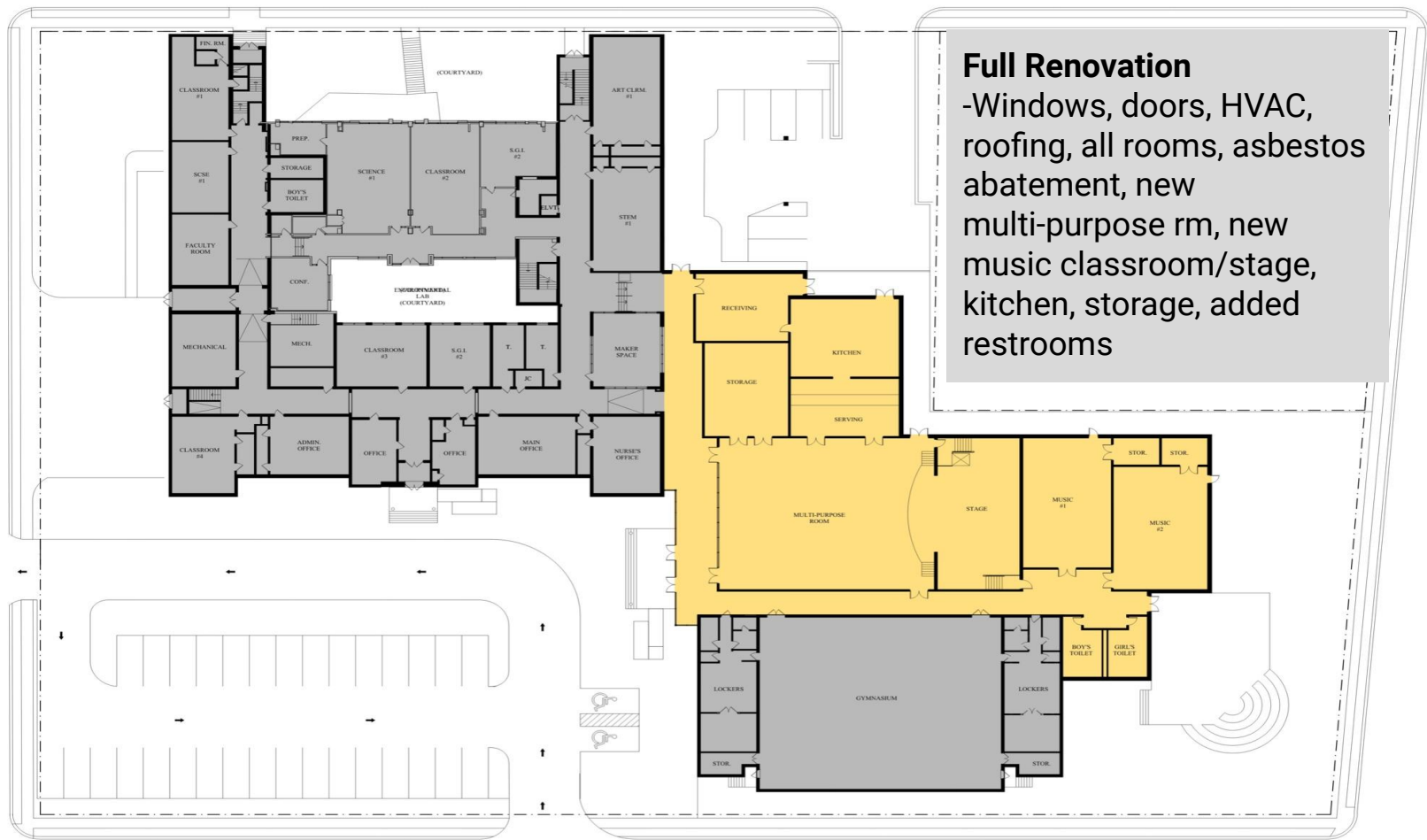
A dark blue diagonal gradient bar that starts from the bottom left and extends towards the top right, covering the lower half of the slide.

Meadowbrook
Addition -
Proposed



ABS Addition - Proposed





Option 1



George White - Floor 1 Option 1

ROOM UTILIZATION:	
GENERAL CLASSROOMS (18)	
6TH GRADE = 6	
7TH GRADE = 6	
8TH GRADE = 6	
SCIENCE LABS (4)	
STEM / MAKER / THINK TANK (2.5)	
ADMIN / FACULTY / NURSE	
CORE SPACES (3)	
PROGRAM (3)	
ART = 1	
MUSIC = 2	
SPECIAL ED/ SGI (5/3)	
MECH. / STOR. / TOILETS	
OUTDOOR LEARNING ENVIRONMENTS	



FIRST FLOOR PLAN



OPTION - 1
GRADES 6, 7, 8



HILLSDALE BOARD OF EDUCATION

PROPOSED RENOVATIONS/ADDITIONS GEORGE G. WHITE SCHOOL



October 00, 2023

George White - Floor 2 Option 1



SECOND FLOOR PLAN

ROOM UTILIZATION:	
GENERAL CLASSROOMS (18)	
6TH GRADE = 6	
7TH GRADE = 6	
8TH GRADE = 6	
SCIENCE LABS (4)	
STEM / MAKER / THINK TANK (2.5)	
ADMIN. / FACULTY / NURSE	
CORE SPACES (3)	
PROGRAM (3)	
ART = 1	
MUSIC = 2	
SPECIAL ED/ SGI (5/3)	
MECH. / STOR. / TOILETS	
OUTDOOR LEARNING ENVIRONMENTS	

OPTION - 1
GRADES 6, 7, 8



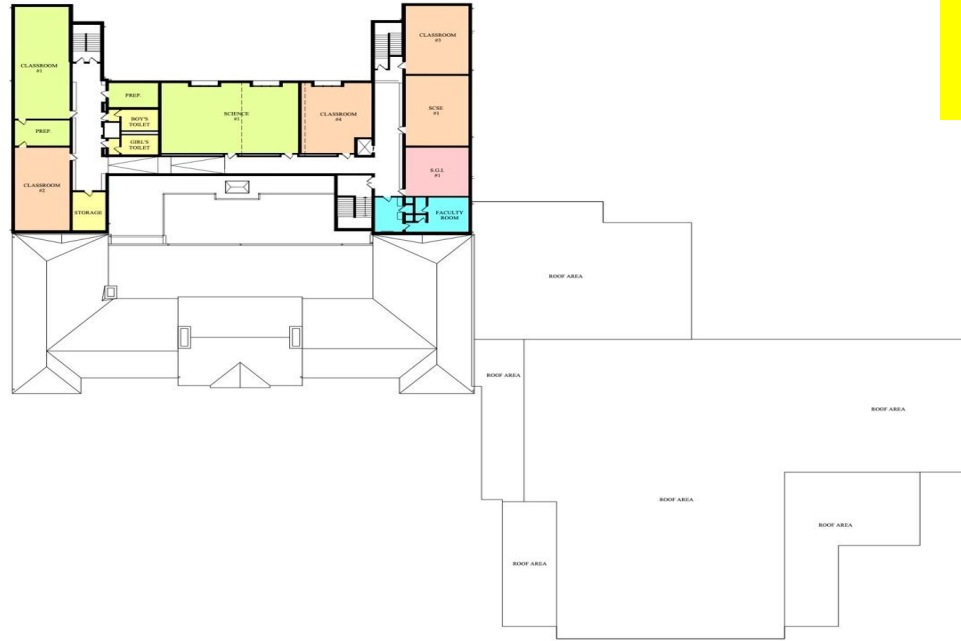
HILLSDALE BOARD OF EDUCATION

PROPOSED RENOVATIONS/ADDITIONS GEORGE G. WHITE SCHOOL



October 00, 2023

George White - Floor 3 Option 1



ROOM UTILIZATION:	
GENERAL CLASSROOMS (18)	
6TH GRADE = 6	
7TH GRADE = 6	
8TH GRADE = 6	
SCIENCE LABS (4)	
STEM / MAKER / THINK TANK (2.5)	
ADMIN. / FACULTY / NURSE	
CORE SPACES (3)	
PROGRAM (3)	
ART = 1	
MUSIC = 2	
SPECIAL ED/ SGI (5/3)	
MECH. / STOR. / TOILETS	
OUTDOOR LEARNING ENVIRONMENTS	

THIRD FLOOR PLAN



OPTION - 1
GRADES 6, 7, 8



HILLSDALE BOARD OF EDUCATION

PROPOSED RENOVATIONS/ADDITIONS GEORGE G. WHITE SCHOOL

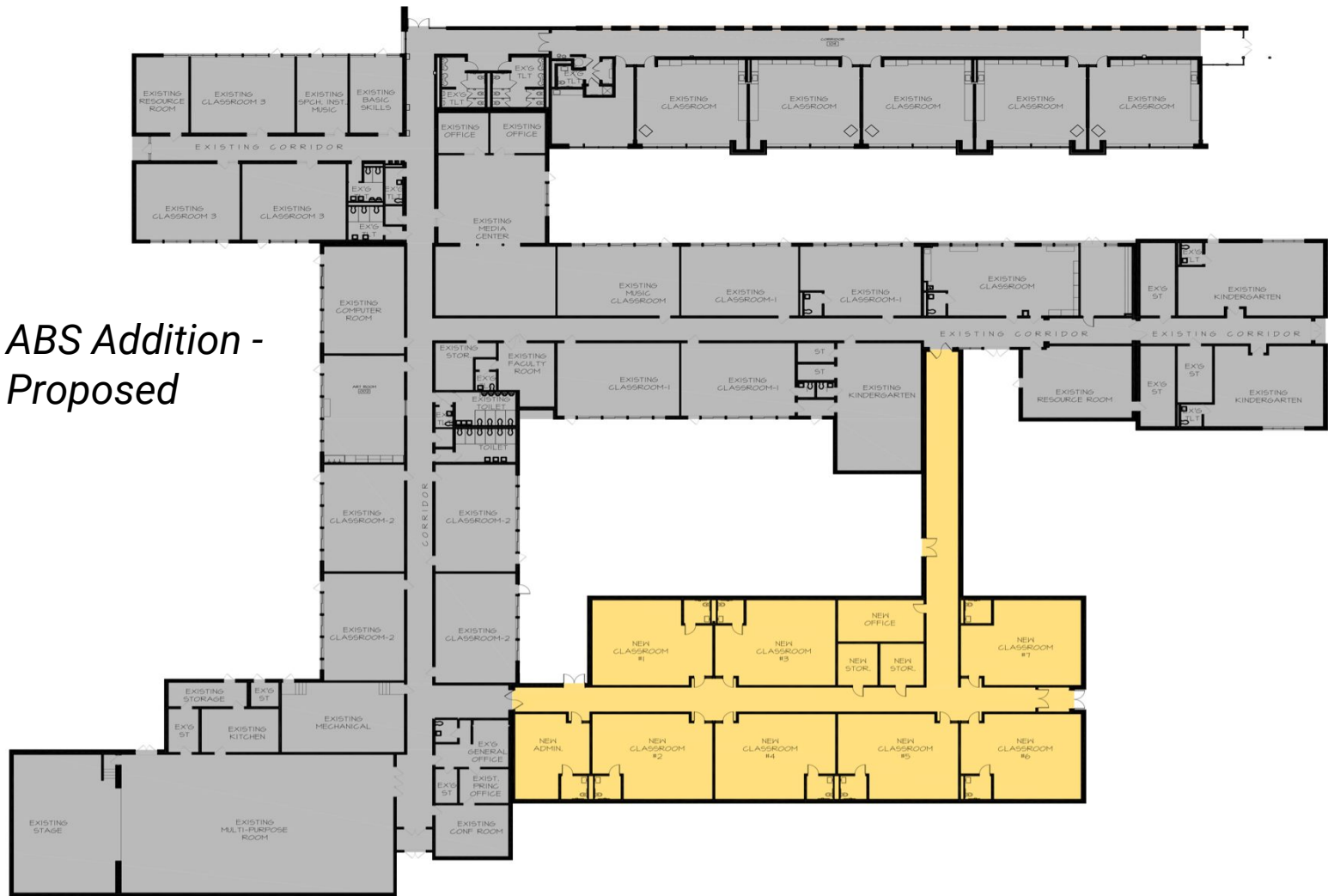


October 00, 2023

Meadowbrook
Addition -
Proposed



ABS Addition - Proposed



Option 2



George White - Floor 1 Option 2

ROOM UTILIZATION:	
GENERAL CLASSROOMS (18)	
6TH GRADE = 6	
7TH GRADE = 6	
8TH GRADE = 6	
SCIENCE LABS (4)	
STEM / MAKER / THINK TANK (3)	
ADMIN. / FACULTY / NURSE	
CORE SPACES (3)	
PROGRAM (5)	
ART = 1	
MUSIC = 2	
CULINARY = 1	
AT LAB = 1	
SPECIAL ED/ SGI (6/4)	
MECH. / STOR. / TOILETS	
OUTDOOR LEARNING ENVIRONMENTS	



FIRST FLOOR PLAN

OPTION - 2
GRADES 6, 7, 8



HILLDALE BOARD OF EDUCATION

PROPOSED RENOVATIONS/ADDITIONS GEORGE G. WHITE SCHOOL

George White - Floor 2 Option 2



SECOND FLOOR PLAN

ROOM UTILIZATION:	
GENERAL CLASSROOMS (18)	
6TH GRADE = 6	
7TH GRADE = 6	
8TH GRADE = 6	
SCIENCE LABS (4)	
STEM / MAKER / THINK TANK (3)	
ADMIN. / FACULTY / NURSE	
CORE SPACES (3)	
PROGRAM (5)	
ART = 1	
MUSIC = 2	
CULINARY = 1	
AT LAB = 1	
SPECIAL ED/ SGI (6/4)	
MECH. / STOR. / TOILETS	
OUTDOOR LEARNING ENVIRONMENTS	

OPTION - 2
GRADES 6, 7, 8



HILLSDALE BOARD OF EDUCATION

PROPOSED RENOVATIONS/ADDITIONS GEORGE G. WHITE SCHOOL

George White - Floor 3 Option 2



ROOM UTILIZATION:	
GENERAL CLASSROOMS (18)	
6TH GRADE = 6	
7TH GRADE = 6	
8TH GRADE = 6	
SCIENCE LABS (4)	
STEM / MAKER / THINK TANK (3)	
ADMIN. / FACULTY / NURSE	
CORE SPACES (3)	
PROGRAM (5)	
ART = 1	
MUSIC = 2	
CULINARY = 1	
AT LAB = 1	
SPECIAL ED/ SGI (6/4)	
MECH. / STOR. / TOILETS	
OUTDOOR LEARNING ENVIRONMENTS	

THIRD FLOOR PLAN



HILLSDALE BOARD OF EDUCATION

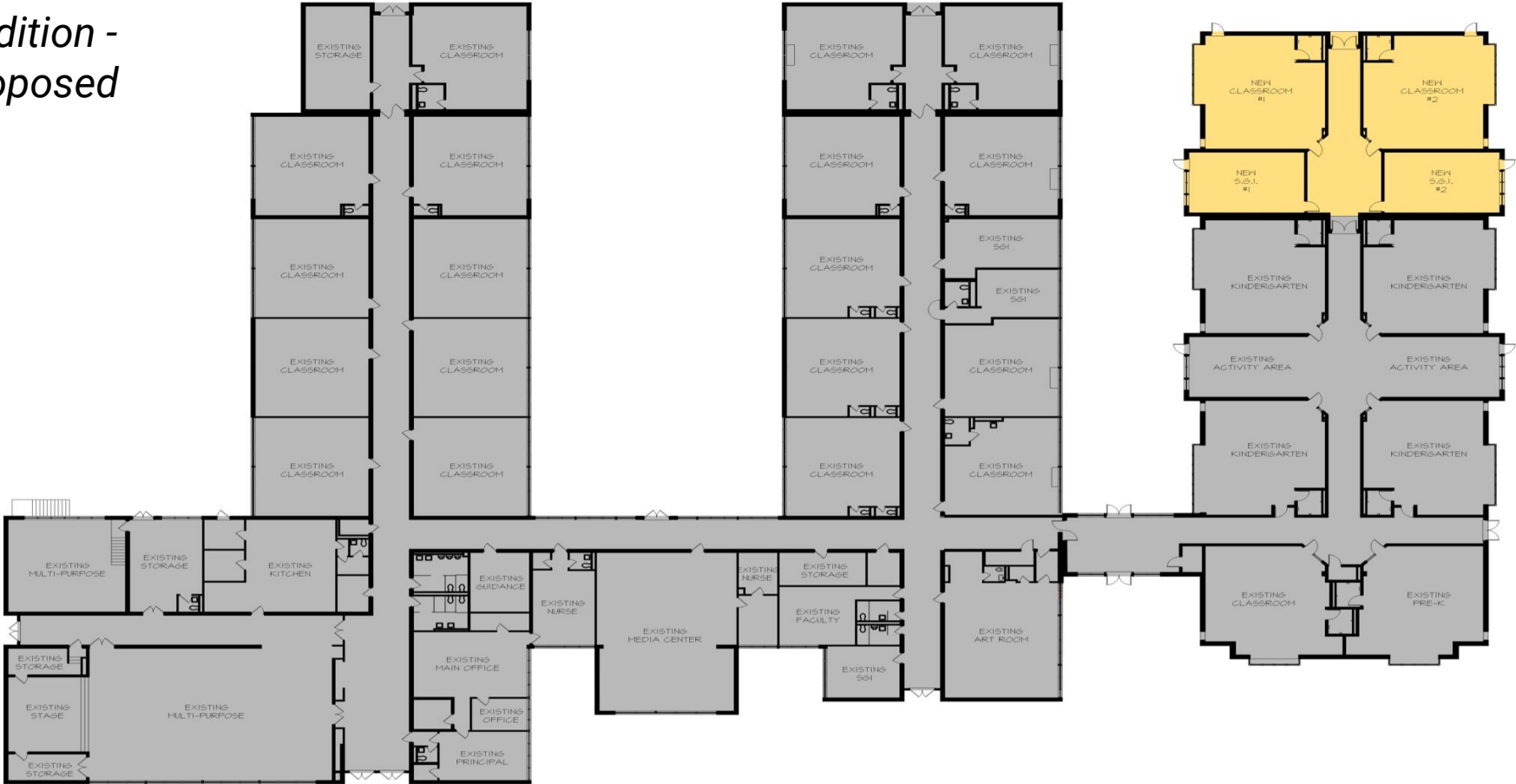
PROPOSED RENOVATIONS/ADDITIONS GEORGE G. WHITE SCHOOL



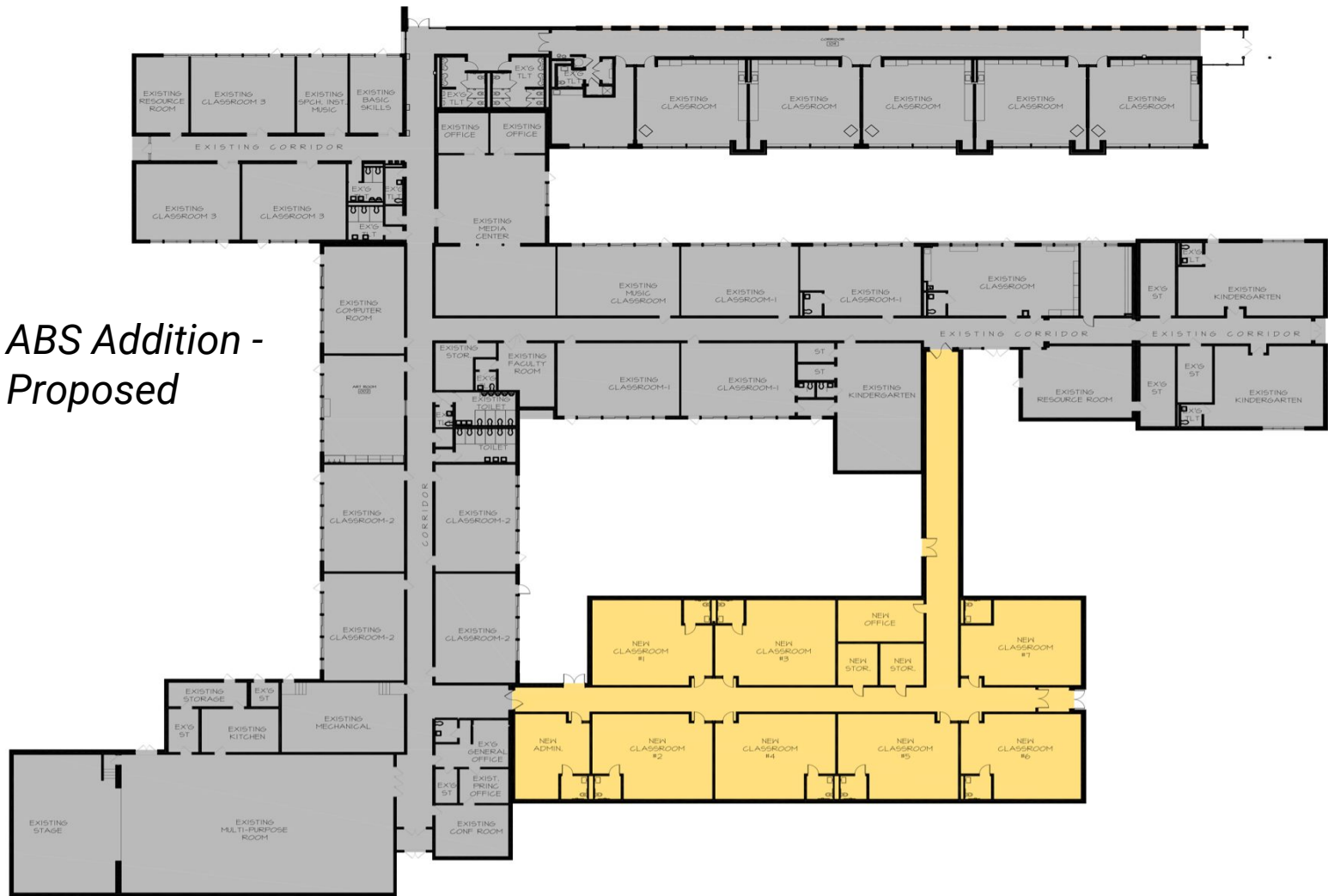
October 00, 2023

OPTION - 2
GRADES 6, 7, 8

Meadowbrook
Addition -
Proposed



ABS Addition - Proposed



Option 3





SECOND FLOOR PLAN

ROOM UTILIZATION:	
GENERAL CLASSROOMS (24)	
5TH GRADE = 6	
6TH GRADE = 6	
7TH GRADE = 6	
8TH GRADE = 6	
SCIENCE LABS (4)	
STEM / MAKER / THINK TANK (3)	
ADMIN. / FACULTY / NURSE	
CORE SPACES (3)	
PROGRAM (3)	
ART = 1	
MUSIC = 2	
SPECIAL ED/ SGI (5/3)	
MECH. / STOR. / TOILETS	
OUTDOOR LEARNING ENVIRONMENTS	

George White - Floor 1 Option 3

- 5th Grade Remains
- Additional Classrooms on 1st Floor and 2nd Floor

OPTION - 3
GRADES 5, 6, 7, 8



HILLSDALE BOARD OF EDUCATION

PROPOSED RENOVATIONS/ADDITIONS GEORGE G. WHITE SCHOOL



October 00, 2023

George White - Floor 2 Option 3

- 5th Grade Remains
- Additional Classrooms on 1st Floor and 2nd Floor



ROOM UTILIZATION:	
GENERAL CLASSROOMS (24)	
5TH GRADE = 6	
6TH GRADE = 6	
7TH GRADE = 6	
8TH GRADE = 6	
SCIENCE LABS (4)	
STEM / MAKER / THINK TANK (3)	
ADMIN. / FACULTY / NURSE	
CORE SPACES (3)	
PROGRAM (3)	
ART = 1	
MUSIC = 2	
SPECIAL ED/ SGI (5/3)	
MECH. / STOR. / TOILETS	
OUTDOOR LEARNING ENVIRONMENTS	

SECOND FLOOR PLAN



OPTION - 3
GRADES 5, 6, 7, 8



HILLSDALE BOARD OF EDUCATION

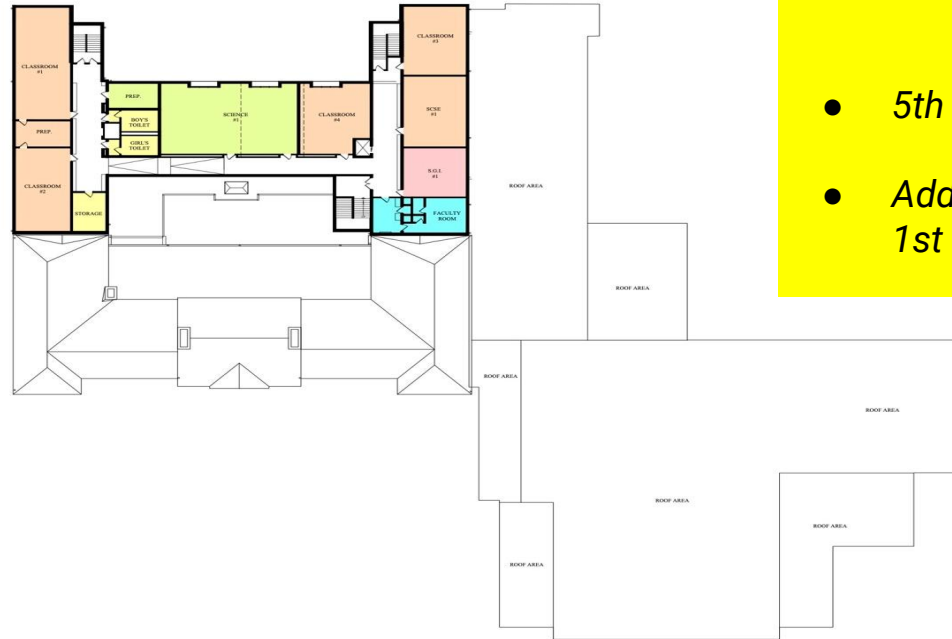
PROPOSED RENOVATIONS/ADDITIONS GEORGE G. WHITE SCHOOL



October 00, 2023

George White - Floor 3 Option 3

- 5th Grade Remains
- Additional Classrooms on 1st Floor and 2nd Floor



THIRD FLOOR PLAN



ROOM UTILIZATION:	
GENERAL CLASSROOMS (24)	
5TH GRADE = 6	
6TH GRADE = 6	
7TH GRADE = 6	
8TH GRADE = 6	
SCIENCE LABS (4)	
STEM / MAKER / THINK TANK (3)	
ADMIN. / FACULTY / NURSE	
CORE SPACES (3)	
PROGRAM (3)	
ART = 1	
MUSIC = 2	
SPECIAL ED/ SGI (5/3)	
MECH. / STOR. / TOILETS	
OUTDOOR LEARNING ENVIRONMENTS	

OPTION - 3
GRADES 5, 6, 7, 8



HILLSDALE BOARD OF EDUCATION

PROPOSED RENOVATIONS/ADDITIONS GEORGE G. WHITE SCHOOL



October 00, 2023

Framing the Question(s)

A dark blue, solid-colored shape that starts as a thin line on the left and expands diagonally upwards to the right, filling the bottom half of the slide.

How to ask the question . . .

***Asking One Question
Encompassing One Plan***

Vs.

***Asking More Than One
Question Encompassing One
Plan***

Breakout Sessions

- Groups are randomly organized by color coded index card.
- With your randomly selected group go to the location as indicated in the presentation.
- Each group will need 1 recorder and 1 speaker. This can be the same person.
- As indicated on the 1 pager, provide feedback to be shared when everyone comes back together.
- Breakout session will last about 25 minutes.

Breakout Sessions

Breakout Session Task

1. Are the traits between Option 2 and Option 3 clear?
2. Which plan does the group feel will most benefit the children of Hillsdale, both current and future?
3. How can you be a voice to support this for Hillsdale with other community stakeholders?
4. What is your feeling about asking multiple questions?

Breakout Sessions

Yellow Group - 112

Blue Group -114

Purple Group -115

Green - Cafetorium

Pink Group -Cafetorium

White Group - Music Room -117

Additional As Needed

102, 105, 101A

Breakout
Sessions



Feedback
&
Sharing

Thank You!

A dark blue diagonal gradient bar that starts from the bottom left corner and extends towards the top right corner, covering the lower half of the slide.